

GENERAL FEDERATION OF WOMAN'S CLUB-Big Rapids, Inc.

Linda Telfer, President
Pat Rossi, 1st Vice President
Melanie Henry, 2nd VP(Membership)
Joyce Iltis, Secretary
Sue Johnson, Treasurer
Ann Stellard, Parliamentarian

WEBSITE: GFWC-BIGRAPIDS.ORG



“Working for a Better Community”

January, 2024



President's Note

“It's easy to make a buck. It's a lot tougher to make a difference” — Tom Brokaw

Happy New Year! I hope that all of you were able to spend time with family and make some memories over the holidays. Here we are into reporting season for GFWC. You should be very proud of your accomplishments in 2023 so let's report .

Linda Telfer, Club President & Newsletter Editor
(Contact info: LindaTelfer@ferris.edu (231-250-2088)
Deadline for submission is the 25th of the month.

P.S. How many snowflakes can you find? (It may look a little different in some areas)



January 9—Club Meeting @ The Elk's 6:00 pm social time/6:30 pm meeting

January 15—MLK Jr. Day of Service - Manna Pantry & Project Starburst

May 2-5, 2024—GFWC Michigan State Convention—Menominee, MI

June 29-July 1—GFWC National Convention—Chicago, IL

CHECKLIST FOR MEETING

- Secret Sister Gift (if participating)
- Batteries for Recycling
- Can Tabs for the Ronald McDonald House
- Quarters for Heifer International
- Greeting Cards (used) for the Senior Center

**HAPPY
BIRTHDAY**



JANUARY BIRTHDAYS

NO BIRTHDAYS

Club Members—Cares and Concerns

Carl & Joan Boroff

Cathy Chapman (father's passing)

Mary Sue Hansen

Joyce Iltis (continuing to improve)

BJ Johnson (Sue's son-continued treatments)

REPORTING

**PLEASE SUBMIT YOUR PERSONAL HOURS AND
DONATIONS TO THE ENDORSED ORGANIZATIONS
TO PAT ROSSI BY JANUARY 12.**



Don't forget your secret sister!



UPCOMING EVENTS



MARTIN LUTHER KING, JR. DAY OF SERVICE **January 15, 2024**

You will have the opportunity to volunteer at Manna Pantry and/or Project Starburst on January 15. I trust that you have signed up at the November meeting. They will have some special projects for us with more information coming.

WOMAN OF ACHIEVEMENT

As mentioned in the last newsletter, nominations will be taken for the Woman of Achievement Award. Criteria is:

- Civic minded and involved in her community as a volunteer, an officer or as an appointee. Acknowledged as an “achiever.”
- Actively involved in her club including but not limited to an office or chairmanship. Active in other organizations or clubs.
- Actively involved in her faith or religious institution.

Past honorees are:

2006 Barbara Randle
2007 Mary Sue Hansen
2008 Jerena Keys
2009 Bonnie Jacoby
2011 Sue Johnson
2013 Joyce Iltis
2015 Dee Van Horn
2017 Beth Martz
2019 Ruth York
2021 Melanie Henry

SPRING TEA/SCHOLARSHIP COMMITTEE



Thank you for your comments and ideas regarding the idea of a Spring Tea/Scholarship initiative. If you are interested in serving on a committee to come up with criteria and how this will work, please let Linda Telfer know (250-2088). The committee will begin meeting soon to brainstorm this further so that it can be presented to the membership.



WHAT'S BEEN HAPPENING

THE MITTEN TREE

The Mitten Tree had another successful year. Thank you to everyone who assisted with this. Over 200 items were collected and given to Angels of Action.



4B'S FUNDRAISER CHECK

A check in the amount of \$2090.50 was presented to Artworks for the children's programs. This was a result of the 4B's fundraiser. Congratulations on a wonderful fundraiser for the children in our community.

FUN

2023 CHRISTMAS PARTY

FUN



CHRISTMAS PARTY 2023 (continued)



Table favors created by Delores Simpson.



Centerpieces created by the Environment CSP.



CHRISTMAS PARTY 2023 (continued)



ANN STELLARD—WINNER OF THE UGLY SWEATER CONTEST.

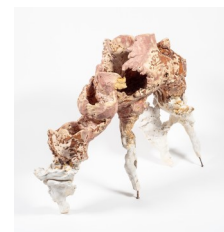


WISE CHRISTMAS FAMILY



Thanks for all your generous donations, the WISE Christmas family gifts were secured for a mother and her 3, 2 and 1 year olds plus a baby. A BIG THANK YOU to the committee for following through with this even if it was kind of a last minute project.

WOMAN ARTIST OF THE MONTH (provided by the Arts & Culture CSP)



REBECCA CASEMENT



Rebecca creates honest and emotive abstract sculptures using ceramics, mixed media, and textiles to call attention to the moments in life that alter who you are and how you see the world. Her creative research is focused on the physiological and psychological impact that occurs when the human body is altered by adverse natural occurrences like disease, or external forces like assault or abuse. Casement strives to create an intimate look at emotions and experiences that are often considered private, with the goal of giving voice back to those who have experienced adversity.

Rebecca Casement is a visual artist that creates affective abstract sculptures and installations using ceramics, mixed media, and textiles. Her work beautifully calls to attention the moments in life that alter who you are and how you see the world. She received her MFA in Studio Art from Michigan State University in May 2020. She was awarded the Glen Arbor Arts Center Artist in Residence in 2019 and has been included in the juried online directory, All She Makes and the art blog Synthetic Meatball. Her work has been included in numerous solo, small group, national and international juried exhibitions including Tangent Gallery in Detroit, the Michigan Institute of Contemporary Art in Lansing, Michigan, Buckham Gallery in Flint, Michigan, as well as the Cloyde Snook Gallery in Alamosa, Colorado. Learn more about Rebecca and her work: rebeccacase-ment.com IG: [@rmcasement_art](https://www.instagram.com/rmcasement_art)

Artist Statement

My sculptures and installations explore the experiences in life that can alter who we are and how we view the world. I am often showing the results of intense personal experiences that I balance with a call for community, humanity, and care. A variety of materials are used and interwoven to represent our varied experiences and histories, and then they are pushed until weaknesses are revealed. I utilize that vulnerability to a point that it becomes a new form of structure. In the process, the "scar" comes to symbolize potential, even beauty. A new strength is found.

As a woman, touch is central to my exploration as an artist. By choosing to create work that is predominately made using only my hands and with materials that are traditionally used by women, I enter the dialogue of pain with empathy. I also enter it with honesty. Imprinted in my art is how we use our bodies and our words to harm and heal; and question what our role is individually and culturally.

Happy
New Year!

The Puzzle

HAPPY NEW YEAR

C C O N F E T T I I E O B
O W H C E L E B R A T E R
U N R A G A U H I E I I B
N T E E M H A P A R T Y E
T F N N G P Y E D T Y D G
D O E R P R A O H F S R I
O O W H A S O G H R U H N
W T I U R F I U N I S N N
N B N E A N N T P E R N I
B A L L D R O P R N E R N
J L U I E R U F E D P T G
T L M A T K E M U S I C B
N F N F I R E W O R K S P

BALLDROP BEGINNING CELEBRATE CHAMPAGNE CONFETTI
COUNTDOWN FIREWORKS FOOD FOOTBALL FRIENDS FUN HATS
JANUARY MIDNIGHT MUSIC PARADE PARTY REFRESH REGROUP
RENEW